

FILTER MEDIA COMPARISON



Use of the correct and ideal filter medium has considerable advantages and ensures operational reliability and cost-effectiveness. This applies both for new installations and retrofitting projects.

TYPES OF FILTER MEDIA AVAILABLE ON THE MARKET

- Mat filters
- Filter bags
- Pocket-type filters
- Cartridge filters
- Rigid body membrane filters

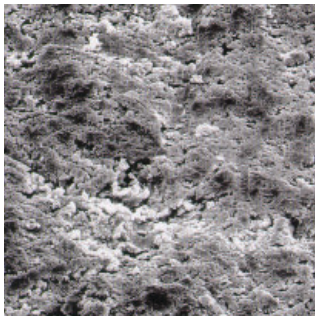
TYPES OF FILTRATION

- Deep-bed filtration
- Mixed filtration
- Surface filtration

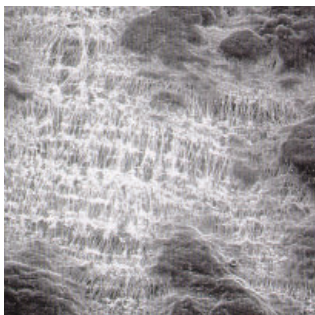


FILTER MEDIA COMPARISON

RIGID BODY FILTER



filter offered by the competition

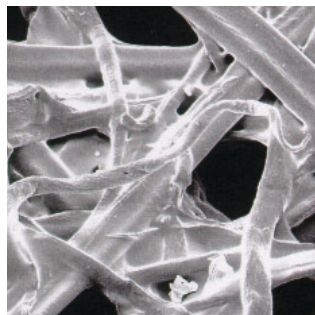


SINBRAN® filter surface filtration, smooth surface, fine texture

TEXTILE FILTER MEDIA

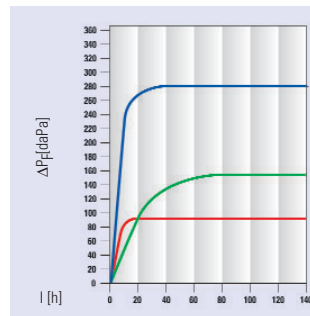


pocket-type filter (polyester needle felt)



cartridge filter (cellulose) deep-bed filtration, rough surface, large texture

PRESSURE LOSS



air-to-cloth ratio = 120 m/hr

— standard rigid body filter

— textile filter media

— SINBRAN®

ADVANTAGES OF RIGID BODY FILTERS (SINBRAN®) COMPARED TO CARTRIDGE AND TEXTILE FILTERS

- entirely surface filtration
- because there are no folds there is no waste of filtration area
- filter cleaning is facilitated by the smooth surface
- constant airflow rate and constant filtration resistance
- recirculation of the filtered air is often feasible, even if carcinogenic substances are filtered, taking into consideration TRGS 560
- emission rate < 0.1 mg/m³ (< 0.2 mg/m³)
- higher air-to-cloth ratios combined with a compact design
- washable
- very long filter life cycles - exceeding 15,000 hours
- BIA certified, meeting the requirements of dust class M (former categories U, S, G and C)



SINBRAN®



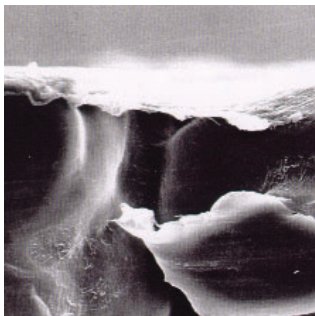
SINtered rigid body filter with laminated PTFE-Mem**BRAN**e

SINBRAN - a joint product of



RIGID BODY FILTERS

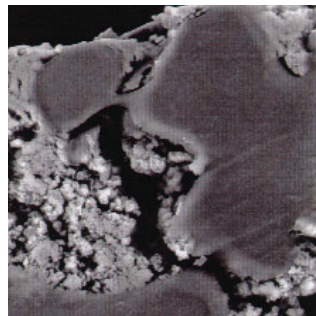
SINBRAN®



PTFE-membrane laminated onto the surface of the rigid body filter

thin
closed
continuous
uniform
rigid body, with porous membrane

COMPETITOR'S PRODUCT

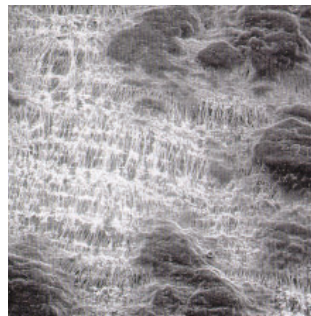


dispersion from PTFE-powder, water and tensides; applied manually and dried

different thicknesses
perforated
intermittent
irregular
partially permeable

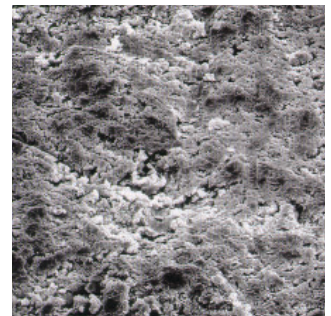
SURFACE STRUCTURE

SINBRAN®



SINBRAN® rigid body media surface filtration (ideal)

COMPETITOR'S PRODUCT



standard rigid body media (product of the competition) surface filtration (approximate)

The smooth uniformity of the membrane results in a surface filtration with extremely high filtration efficiency and low pressure loss, thus ensuring safer working conditions.



THE SINBRAN® ADVANTAGES

- Well-controlled filter fabrication process ensures consistent quality.
- Larger homogeneous filter area.
- Ideal surface filtration.
- Simple surface cleaning.
- Very long life cycles.
- Low filter resistance, both in dusted and clean state.
- Highest filtration efficiency.
- Recirculation of the filtered air is often possible, depending on the substances that are exhausted (in compliance with TRGS).

